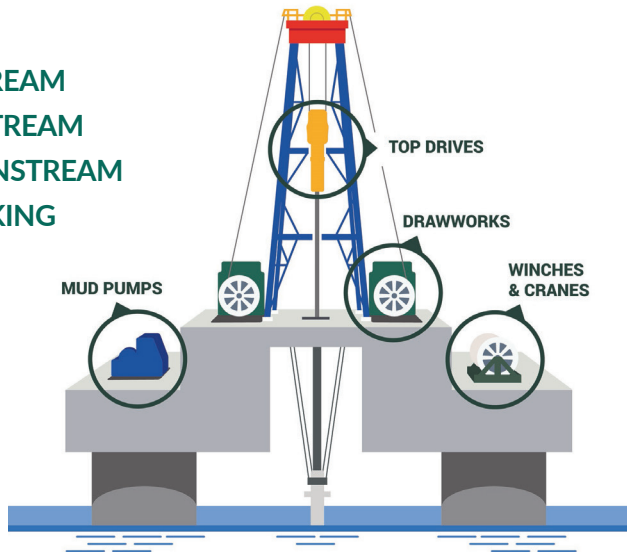


# OIL & GAS



**HORSBURGH & SCOTT**  
DELIVERING THE DIFFERENCE

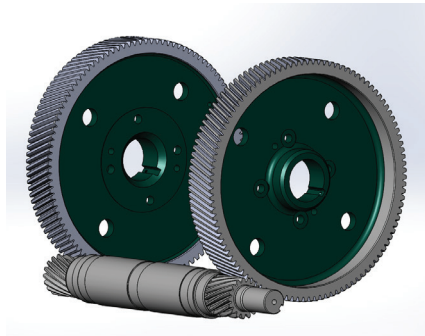
UPSTREAM  
MIDSTREAM  
DOWNSTREAM  
FRACKING



**HORSBURGH & SCOTT IS KNOWN FOR PROVIDING THE MOST INNOVATIVE AND HIGHEST QUALITY CUSTOM GEARING THAT WILL STREAMLINE OIL AND GAS OPERATIONS AND STAND UP TO SEVERE CONDITIONS AND DEMANDING USAGE.**

## APPLICATIONS

- Top Drives
- Drawworks Gearing
- Winch Gears
- Slew Ring Gears
- Jackup Rig Gearing
- Hoist Gearing
- Crane Gearing
- Mud Pump Gearing
- Frac Pump Gearing
- Well-Servicing Pump Gearing



## SERVING THE OIL & GAS INDUSTRY WITH INNOVATIVE ENGINEERING FOR OVER 50 YEARS

**Maximize Profitability** with gear and gearbox re-engineering and performance upgrades

**Fastest Turnaround Time** in the gearing industry

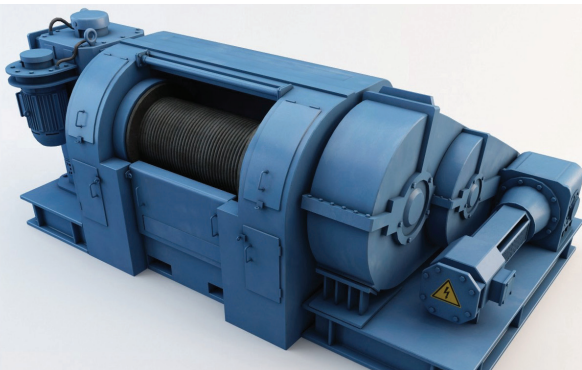
**Dependable On-Time Delivery**

**Most Knowledgeable and Experienced** engineers in the industry

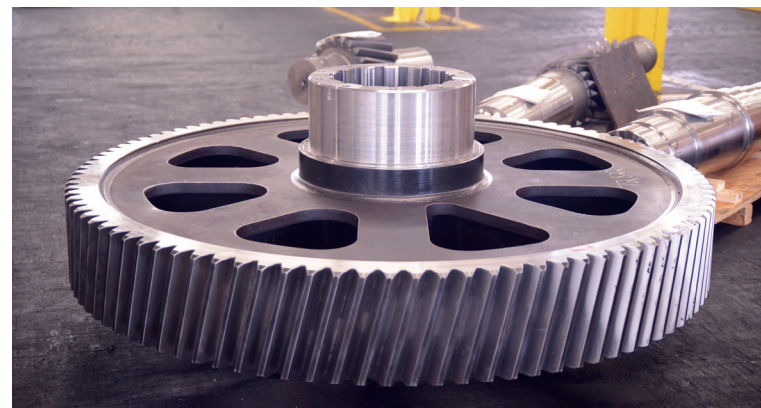
**Quality** and durability you can depend on



**Winches and Cranes** We provide gears that can withstand the most adverse environmental conditions of offshore and onshore drilling.



**Drawworks** We understand that as a key component in oil & gas drilling, it is crucial to ensure safety, efficiency and reliability in drawworks applications.



**Top Drives** We provide advance high quality top drive designs and complete turnkey solutions.

**DELIVERING THE DIFFERENCE**



**HORSBURGH & SCOTT**

# ADVANCED GEARING CAPABILITIES



## KEY CAPABILITIES

- 237,000 sq. ft. of manufacturing
- 35,000 sq. ft. of heat treating
- 6,500 sq. ft. — H&S Canada (Lively, ON)

## ENGINEERING EXPERTISE

- Over 25,000 hours/year
- Drawings for over 90 different gearbox brands and spare parts

## INNOVATIVE EQUIPMENT

- Fellows 65-16 Shaper with full CNC controls
- Giddings & Lewis VTC 2000 vertical turning
- Gleason-Pfauter P1600/2000 hobber/gasher
- Gleason-Pfauter P2000G form grinder
- Gleason-Pfauter P2006 form grinder
- Gleason-Pfauter P2400/3000 hobber/gasher
- Hofler R1600/2000 form grinder
- Hofler R6000 form grinder
- Hofler 1600 form grinder
- Schiess horizontal boring mill
- G&L 3500 vertical turning center
- Farrel 50 ft. vertical turning center
- Aichlin pit furnace (2)



The **Gleason-Pfauter Hobber/Gasher** improves productivity with a **7x Reduction in Hobbing Time.**

## THE COMPANY MOST QUALIFIED TO HANDLE ALL YOUR GEARING NEEDS.

### TURNKEY GEARING SOLUTIONS

- Design to Manufacturing
- Repair & Rebuild
- Field Service
- Reverse Engineering and Performance Upgrades
- Gears up to 24 ft. (7.3m) in diameter and 287 in.
- Gearbox Types: Planetary, Parallel Shaft, Split Shaft, Right Angle, Multi-Speed
- In-house Heat Treating and Carburizing up to 50,000 lbs. (22,000 kg)
- Induction Hardening to 5m in diameter or 30,000 lbs. (13,000 kg)
- Inspection and Testing

### GEAR & SHAFT GRINDING SPECIFICATIONS

- External: outside diameter to 6.0m (237 in.)
- Internal: outside diameter to 3.5m (138 in.)
- Face width: up to 2.0m (79 in.)
- Module: up to 40 (0.63 DP)
- ISO grade: up to 4 (AGMA quality 14)

### GEAR TOOTH CUTTING SPECIFICATIONS

- Spur, helical, double helical, herringbone, internal and worm gears
- External: outside diameter to 7.3m (287 in.)
- Internal: outside diameter to 4.8m (189 in.)
- Face width: up to 1.3m (50 in.)
- Module: up to 70 (.375 DP)
- ISO grade: up to 8 (AGMA quality 10)

**MOST TRUSTED NAME IN GEARING FOR OVER 130 YEARS**

**WE'VE REBUILT THOUSANDS OF GEARBOXES, MORE THAN 120 DIFFERENT BRANDS**



u.s. (main) plant 216.431.3900  
canadian plant 705.692.1414



[inquiry@horsburgh-scott.com](mailto:inquiry@horsburgh-scott.com)



[horsburgh-scott.com](http://horsburgh-scott.com)

**DELIVERING THE DIFFERENCE**



**HORSBURGH & SCOTT**