

# PULP & PAPER

Advanced Gearing Solutions  
for Pulp & Paper Mills

*Delivering the Difference with  
the company most qualified to  
handle all your gearing needs.*

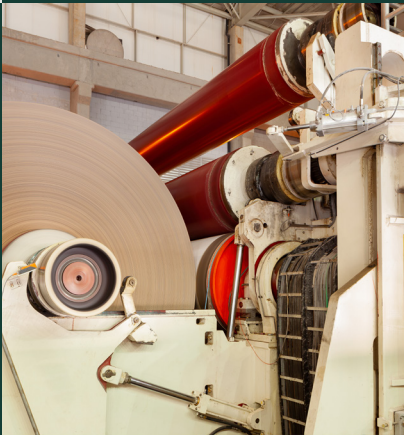
HIGHEST QUALITY  
CUSTOM GEARING



24/7 EXPERT  
ON-SITE  
DIAGNOSTICS,  
MAINTENANCE  
AND REPAIR



REVERSE ENGINEERING  
AND PERFORMANCE  
UPGRADES FOR  
GEARBOX REBUILD  
AND REPAIR



EXPERT GEAR  
AND GEARBOX  
EVALUATION



**HORSBURGH & SCOTT**  
*DELIVERING THE DIFFERENCE*

## PULP & PAPER APPLICATIONS

- Long Wood Deck
- Infeed Deck
- De-barking Drum
- Chipper Feed
- Bark Hog
- Bark Transfer
- Truck Dump Wood Chip Hopper
- Chip Pile Stacker Reclaimer
- Ash Conveyor
- Waste Wood Infeed
- Turbine
- Salt Cake Agitator
- Lime Kiln Drum Ring Gear and Gearbox
- Mixers
- Hydro Pulpers
- Screw Conveyors
- All Drive Rolls
- Press Rolls
- Wire Turning Rolls
- Dryer Can Gears
- Line Shaft Turbine
- Unwinder / Rewinder
- Vacuum Pumps
- Flat Top Floor Chain Drive



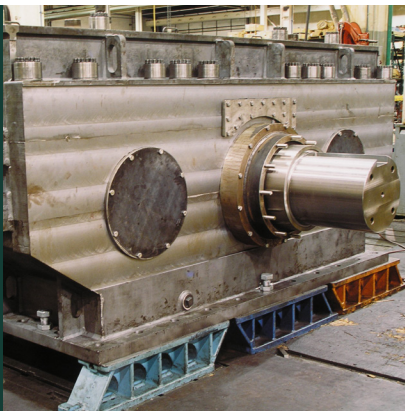
# Advanced Gearing Solutions For Pulp & Paper

Horsburgh & Scott is known for providing the most innovative and highest quality custom gearing that will streamline pulp & paper operations and stand up to demanding plant usage.

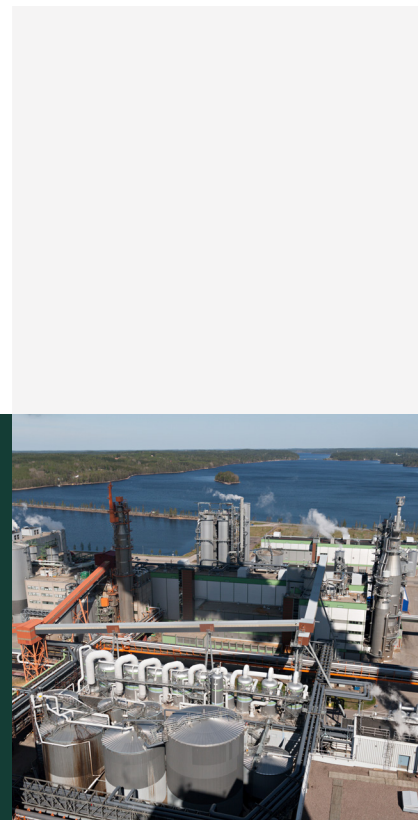
## SERVICES

- Gear inspections
- Gearbox no-load spin testing
- Detailed bore scope inspections
- Non-destructive testing
- FARO Arm on-site measurement for reverse engineering competitive gear drives and gearing
- Laser alignment of shafts
- New bed/sole plates
- Field service

DROP-IN  
REPLACEMENT  
DRIVES AND  
ON-SITE REPAIRS



GEAR DRIVE SYSTEMS  
AND ALL OTHER GEARING  
FOR PULP & PAPER  
APPLICATIONS



THE EXPERT IN  
REBUILDS AND  
UPGRADES





# Our Unique Expertise to Keep Your Pulp & Paper Operations Running

Horsburgh & Scott understands that in the pulp & paper industry downtime is very costly. We have extensive experience in engineering, manufacturing, and rebuilding large gear systems.

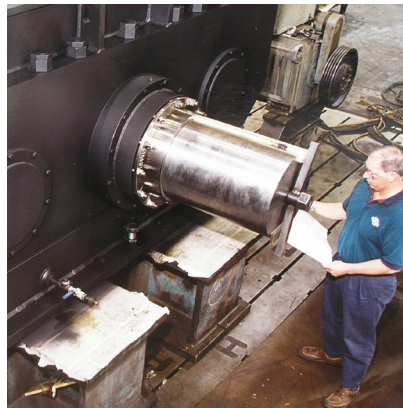
## ADVANTAGES

**MAXIMIZE PROFITABILITY** with gear and gearbox re-engineering and performance upgrades

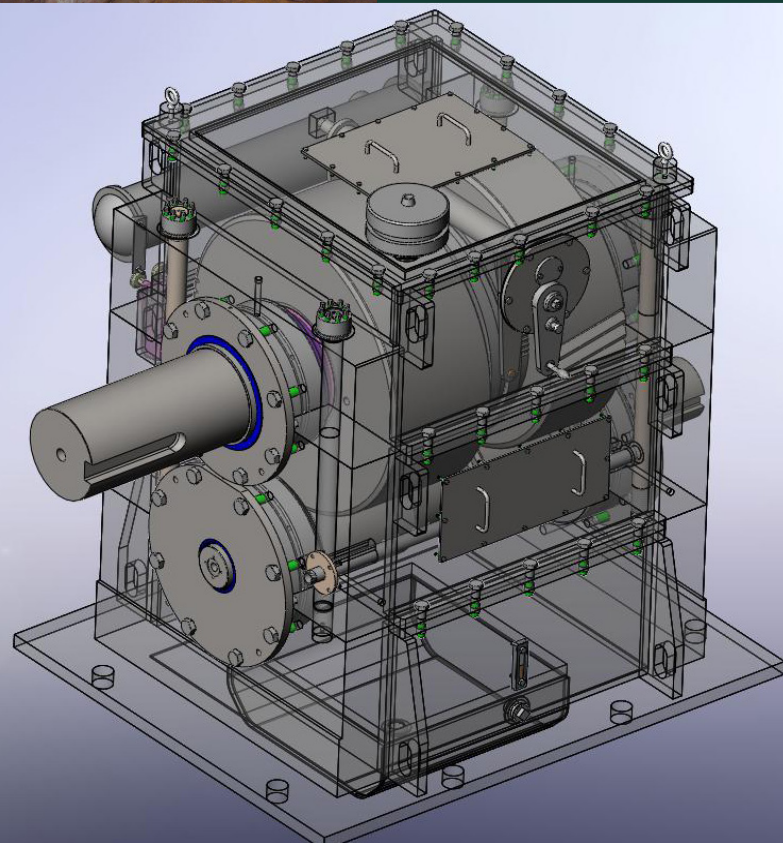
**INCREASED YIELD** and decreased operating costs

**PREVENTATIVE MAINTENANCE** programs increase uptime

**FASTEST TURNAROUND TIME** in the gearing industry



MORE ENGINEERS  
ON STAFF THAN  
ANY OTHER  
COMPANY IN  
GEARING



EQUIPMENT TO  
HANDLE EVEN THE  
LARGEST DRIVES  
AND GEARBOXES



Delivering the Difference for  
Higher Productivity



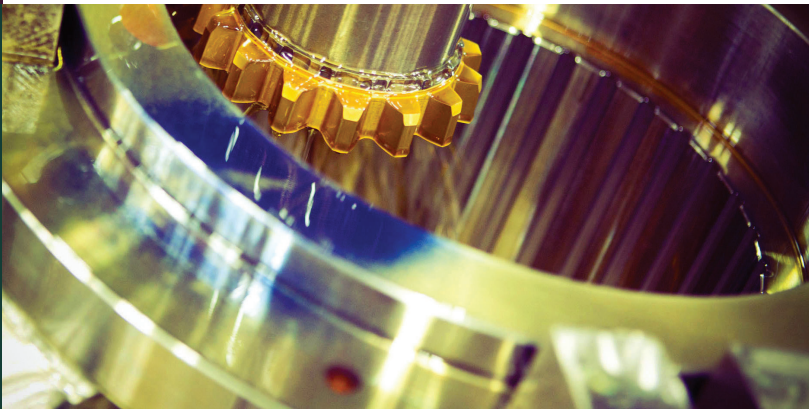
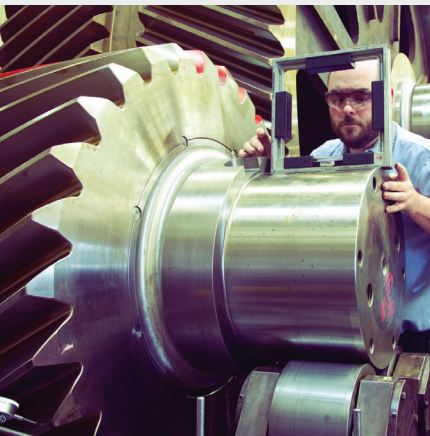
**HORSBURGH & SCOTT**  
*DELIVERING THE DIFFERENCE*

## Over 135 Years of Industry Leadership

Horsburgh & Scott has over 135 years of engineering expertise in high torque, large gear drive systems. We use the world's most advanced gear cutting equipment and can duplicate virtually any gear geometry.

### TURNKEY SOLUTIONS

- Gears up to 40 ft (12m) in diameter
- Grinding to AGMA Class 14
- Heat treating and carburizing up to 50,000 lbs (22,000 kg)
- Induction hardening to 5m in diameter or 30,000 lbs (13,000 kg)
- Quality measurements within 2 microns
- Inspection and testing



 216/431/3900

 [inquiry@horsburgh-scott.com](mailto:inquiry@horsburgh-scott.com)

 [horsburgh-scott.com](http://horsburgh-scott.com)

Cleveland, Ohio | Roscoe, Illinois | Slidell, Louisiana | Sudbury, Ontario

5114 Hamilton Avenue  
Cleveland, Ohio 44114  
USA