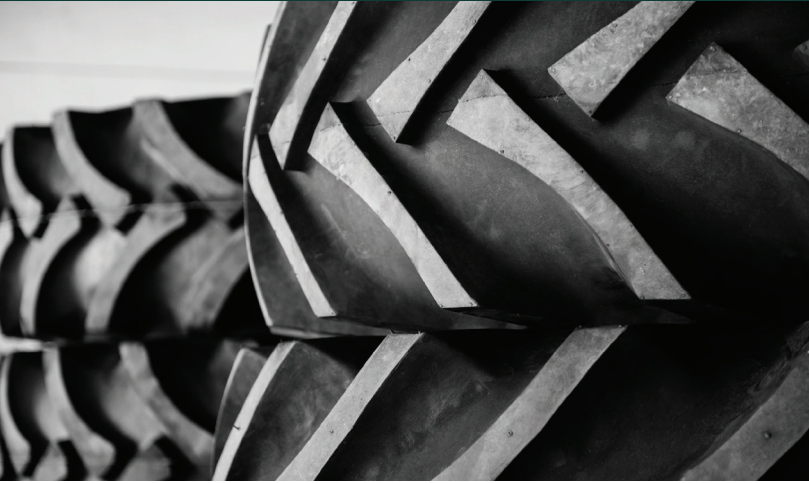


# TIRE & RUBBER



**HORSBURGH & SCOTT IS KNOWN FOR PROVIDING THE MOST INNOVATIVE AND HIGHEST QUALITY CUSTOM GEARING THAT WILL STREAMLINE TIRE & RUBBER OPERATIONS AND STAND UP TO DEMANDING USAGE.**

**WE OFFER QUALITY GEARBOX REPAIR AND DROP-IN REPLACEMENT GEARBOXES FOR THESE HIGHLY DEMANDED UNITS:**

## **FARREL MODELS**

### MIXERS

F620  
F270  
SHR6266  
SRH22

## **LUFKIN MODELS**

### MILL DRIVES

T720  
T540

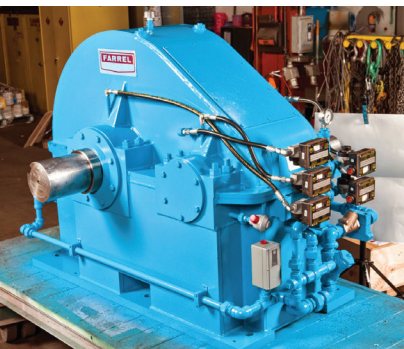
### MIXERS

DF1140  
DF890  
DF1015

**DON'T SEE YOUR DRIVE ON THIS LIST? CALL US.**

## **TIRE & RUBBER APPLICATIONS**

- Rubber Mixer Drives
- Mill Drives - Reclaim, Drop, Breakdown, Takeoff
- Calender Drives - Fabric 4-Roll, Sheet 4-Roll
- Extruder Drives - Roller Dye, Pellet, Sheet
- Sheeter Drives



**HORSBURGH & SCOTT**  
*DELIVERING THE DIFFERENCE*

## THE COMPANY MOST QUALIFIED TO HANDLE ALL YOUR GEARING NEEDS

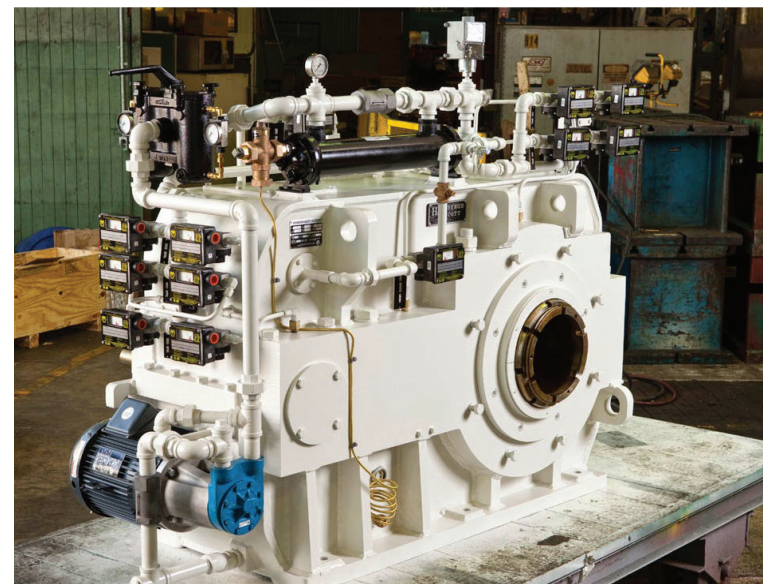
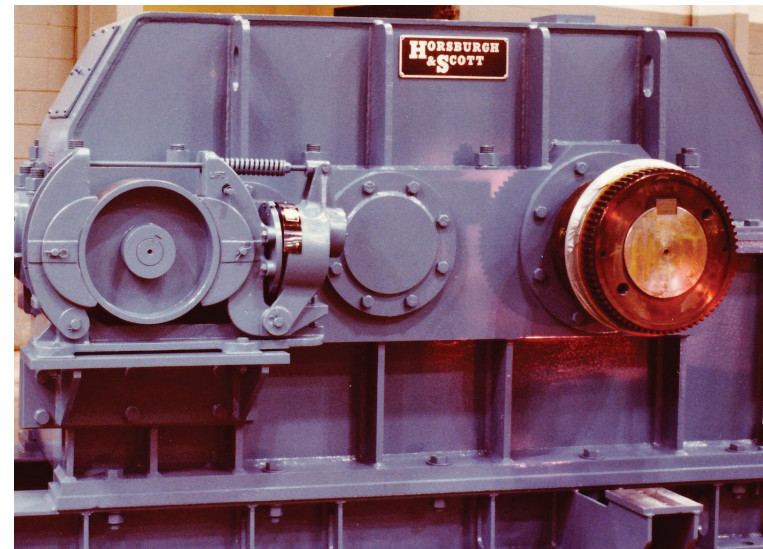
**Maximize Profitability** with gear and gearbox re-engineering and performance upgrades

**Fastest Turnaround Time** in the gearing industry

**Dependable On-Time Delivery**

**Most Knowledgeable and Experienced** engineers in the industry

**Quality** and durability you can depend on



**DELIVERING THE DIFFERENCE**



**HORSBURGH & SCOTT**

# ADVANCED GEARING CAPABILITIES

## KEY CAPABILITIES

- 237,000 sq. ft. of manufacturing
- 35,000 sq. ft. of heat treating
- 6,500 sq. ft. — H&S Canada (Lively, ON)

## ENGINEERING EXPERTISE

- Over 25,000 hours/year
- Drawings for over 90 different gearbox brands and spare parts

## INNOVATIVE EQUIPMENT

- Fellows 65-16 Shaper with full CNC controls
- Giddings & Lewis VTC 2000 vertical turning
- Gleason-Pfauter P1600/2000 hobber/gasher
- Gleason-Pfauter P2000G form grinder
- Gleason-Pfauter P2006 form grinder
- Gleason-Pfauter P2400/3000 hobber/gasher
- Hofler R1600/2000 form grinder
- Hofler R6000 form grinder
- Hofler 1600 form grinder
- Schiess horizontal boring mill
- G&L 3500 vertical turning center
- Farrel 50 ft. vertical turning center
- Aichlin pit furnace (2)



The **Gleason-Pfauter Hobber/Gasher** improves productivity with a **7x Reduction in Hobbing Time.**



**HORSBURGH & SCOTT**  
DELIVERING THE DIFFERENCE

**THE COMPANY MOST QUALIFIED TO HANDLE ALL YOUR GEARING NEEDS.**

## TURNKEY GEARING SOLUTIONS

- Design to Manufacturing
- Repair & Rebuild
- Field Service
- Reverse Engineering and Performance Upgrades
- Gears up to 24 ft. (7.3m) in diameter and 287 in.
- Gearbox Types: Planetary, Parallel Shaft, Split Shaft, Right Angle, Multi-Speed
- In-house Heat Treating and Carburizing up to 50,000 lbs. (22,000 kg)
- Induction Hardening to 5m in diameter or 30,000 lbs. (13,000 kg)
- Inspection and Testing

## GEAR & SHAFT GRINDING SPECIFICATIONS

- External: outside diameter to 6.0m (237 in.)
- Internal: outside diameter to 3.5m (138 in.)
- Face width: up to 2.0m (79 in.)
- Module: up to 40 (0.63 DP)
- ISO grade: up to 4 (AGMA quality 14)

## GEAR TOOTH CUTTING SPECIFICATIONS

- Spur, helical, double helical, herringbone, internal and worm gears
- External: outside diameter to 7.3m (287 in.)
- Internal: outside diameter to 4.8m (189 in.)
- Face width: up to 1.3m (50 in.)
- Module: up to 70 (.375 DP)
- ISO grade: up to 8 (AGMA quality 10)

**MOST TRUSTED NAME IN GEARING FOR OVER 130 YEARS**

**WE'VE REBUILT THOUSANDS OF GEARBOXES, MORE THAN 120 DIFFERENT BRANDS**



u.s. (main) plant 216.431.3900  
canadian plant 705.692.1414



inquiry@horsburgh-scott.com



horsburgh-scott.com

**DELIVERING THE DIFFERENCE**



**HORSBURGH & SCOTT**